

Fairfield Family Histories

(1700s-1982)

**Acknowledgements:
Nelle McMaster Sprott
Walter Woodard Lewis**

**Their help and support contributed greatly
to the publishing of this book.**

*Ed, check this out.
Also, I saw Bundy
today. He has Asbury's
books and said
there is no
mention there.*

Compiled by Faye Johnson and published by Fairfield Publishers, Inc.

Printed by Intercollegiate Press

**History Book Consultant:
Gary French
Rt. 2, Box 322B
Clinton, S.C. 29325**



[Help](#)

MENU

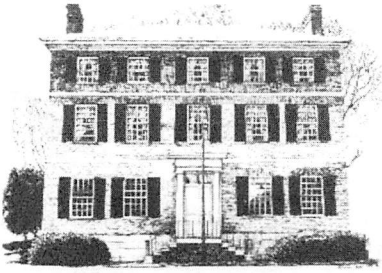
- Database Search
- SCDAH Home Page
- Online Index Home Page
- Series Descriptions
- How to Order Copies
- Suggestions

Record	Description	Date	Image
Series: S165005 Year: ND00 Item: 03890 Page: 009 Record 1 of 35 records	LIST OF APPOINTEES TO VACANT OFFICES IN FAIRFIELD, CHESTERFIELD, NEWBERRY, AND BEAUFORT DISTRICTS AS JUSTICES OF THE PEACE AND QUORUM, CORONERS, NOTARIES, AND COMMISSIONERS OF PUBLIC BUILDINGS, PUBLIC SECURITIES, AND FREE SCHOOLS. (2 PAGES) View all index terms	No date	No online image available
Series: S108092 Reel: 0068 Frame: 00417 ignore: 000 Record 2 of 35 records	HAVIS, JESSE, ACCOUNT AUDITED (FILE NO. 3441) OF CLAIMS GROWING OUT OF THE AMERICAN REVOLUTION. View all index terms	1776 C. or later	No online image available
Series: S213190 Volume: 0027 Page: 00332 Item: 001 Record 3 of 35 records	CRAIG, ROBERT AND JESSE HAVIS, PLAT FOR 330 ACRES ON REEDY FORK, CAMDEN DISTRICT, SURVEYED BY J. WINN. View all index terms	10/1/1791	No online image available
Series: S213190 Volume: 0032 Page: 00006 Item: 002 Record 4 of 35 records	HAVIS, JESSE AND WILLIAM COGGAN, PLAT FOR 263 ACRES ON WATEREE CREEK, CAMDEN DISTRICT, SURVEYED BY RICHARD FRANCIS WINN. View all index terms	4/30/1793	No online image available
Series: S213190 Volume: 0032 Page: 00193 Item: 002 Record 5 of 35 records	HAVIS, JESSE, PLAT FOR 150 ACRES ON KINGS BRANCH, CAMDEN DISTRICT, SURVEYED BY JOHN SMITH FOR JAMES HAWLIS ON APRIL 28, 1773. View all index terms	9/5/1794	No online image available
Series: S213190 Volume: 0033 Page: 00079 Item: 003 Record 6 of 35 records	HAVIS, JESSE, PLAT FOR 401 ACRES ON HORSE BRANCH AND MILL CREEK, FAIRFIELD COUNTY, CAMDEN DISTRICT, SURVEYED BY ANDREW MCDOWELL. View all index terms	9/5/1794	No online image available
Series: S165015 Year: 1797 Item: 00119 ignore: 000 Record 7 of 35 records	HAVIS, JESSE, PETITION ASKING FOR PAYMENT OF HIS ACCOUNT AS DEPUTY SHERIFF OF FAIRFIELD COUNTY. (2/2 PAGES) View all index terms	11/1797	No online image available
Series: S213192 Volume: 0037 Page: 00033 Item: 003 Record 8 of 35 records	HAVIS, JESSE, PLAT FOR 275 ACRES ON DUTCHMANS CREEK, FAIRFIELD COUNTY, CAMDEN DISTRICT, SURVEYED BY ANDREW MCDOWELL ON JANUARY 25, 1796. View all index terms	3/31/1798	No online image available
Series: S165015 Year: 1798 Item: 00105 ignore: 000 Record 9 of 35 records	HAVIS, JESSE, SHERIFF OF FAIRFIELD COUNTY, PETITION ASKING THAT HE MAY BE GRANTED COMPENSATION FOR TRANSPORTING PRISONERS TO THE DISTRICT GOAL AT CAMDEN. (2 PAGES) View all index terms	11/30/1798	No online image available
Series: S165005 Year: 1798 Item: 00093 Page: 000 Record 10 of 35 records	COMMITTEE REPORT ON THE PETITION OF JESSE HAVIS CONCERNING HIS ACCOUNT WHICH CANNOT BE PAID DUE TO THE ABSENCE OF THE SHERIFF OF NINETY SIX. (2 PAGES) View all index terms	12/6/1798	No online image available
Series: S213192 Volume: 0037 Page: 00370 Item: 001 Record 11 of 35 records	SMITH, JACOB, PLAT FOR 180 ACRES ON DUTCHMANS CREEK, FAIRFIELD COUNTY, CAMDEN DISTRICT, SURVEYED BY ANDREW MCDOWELL FOR JAMES LUES ON APRIL 9, 1799. View all index terms	9/20/1799	No online image available
Series: S213192 Volume: 0037 Page: 00508	HAVIS, JESSE, PLAT FOR 290 ACRES ON DUTCHMANS CREEK, FAIRFIELD COUNTY, CAMDEN DISTRICT, SURVEYED BY ANDREW MCDOWELL. View all index terms	4/1/1800	No online

Item: 001 Record 12 of 35 records			image available
Series: S213192 Volume: 0037 Page: 00509 Item: 002 Record 13 of 35 records	HAVIS, JESSE, PLAT FOR 99 ACRES ON WATEREE, FAIRFIELD COUNTY, CAMDEN DISTRICT, SURVEYED BY ANDREW MCDOWELL. View all index terms	4/1/1800	No online image available
Series: S213192 Volume: 0038 Page: 00056 Item: 002 Record 14 of 35 records	HAVIS, JESSE, PLAT FOR 101 ACRES ON THORNTREE, FAIRFIELD COUNTY, CAMDEN DISTRICT, SURVEYED BY ALEXANDER KENNEDY FOR JAMES SEAL ON JANUARY 13, 1800. View all index terms	8/27/1800	No online image available
Series: S108093 Reel: 0011 Frame: 00181 Item: 000 Record 15 of 35 records	AUSTEN, JAMES OF FAIRFIELD DISTRICT, FAIRFIELD COUNTY WILL TYPESCRIPT (1 FRAME) (MSS WILL: FAIRFIELD DISTRICT ESTATE RECORD BOOK B, VOL. 4, PAGES 11-12; ESTATE PACKET: FILE 8, PKG. 1) View all index terms	5/14/1801	Online images available
Series: S213192 Volume: 0038 Page: 00394 Item: 000 Record 16 of 35 records	HAVIS, JESSE, PLAT FOR 409 ACRES ON LITTLE DUTCHMANS CREEK, FAIRFIELD DISTRICT, SURVEYED BY HENRY MOORE. View all index terms	8/15/1801	No online image available
Series: S213192 Volume: 0038 Page: 00547 Item: 002 Record 17 of 35 records	TRUSSEL, WILLIAM, PLAT FOR 113 ACRES ON REEDY CREEK, FAIRFIELD COUNTY, CAMDEN DISTRICT, SURVEYED BY JOHN MILLING FOR JESSE HAVIS ON SEPTEMBER 2, 1786. View all index terms	12/31/1801	No online image available
Series: S108093 Reel: 0011 Frame: 00317 Item: 000 Record 18 of 35 records	STARKE, THOMAS OF FAIRFIELD DISTRICT, FAIRFIELD COUNTY WILL TYPESCRIPT (2 FRAMES)(MSS WILL: FAIRFIELD DISTRICT ESTATE RECORD BOOK C, VOL. 5, PAGE 146; ESTATE PACKET: FILE 31, PKG. 477). View all index terms	3/16/1807	Online images available
Series: S108093 Reel: 0011 Frame: 00272 Item: 000 Record 19 of 35 records	HAVIS, JOHN OF FAIRFIELD DISTRICT, FAIRFIELD COUNTY WILL TYPESCRIPT (2 FRAMES)(MSS WILL: FAIRFIELD DISTRICT ESTATE RECORD BOOK C, VOL. 5, PAGE 180; ESTATE PACKET: FILE 18, PKG. 221). View all index terms	8/15/1807	Online images available
Series: S213192 Volume: 0041 Page: 00388 Item: 002 Record 20 of 35 records	HAVIS, JESSE, PLAT FOR 124 ACRES ON REEDY BRANCH, FAIRFIELD DISTRICT, SURVEYED BY JAMES STEWART. View all index terms	12/17/1808	No online image available
Series: S108093 Reel: 0011 Frame: 00383 Item: 000 Record 21 of 35 records	STEWART, ALEXANDER OF FAIRFIELD DISTRICT, FAIRFIELD COUNTY WILL TYPESCRIPT (2 FRAMES)(MSS WILL: FAIRFIELD DISTRICT ESTATE RECORD BOOK D, VOL. 6, PAGE 185; ESTATE PACKET: FILE 31, PKG. 490). View all index terms	7/22/1813	Online images available
Series: S213192 Volume: 0043 Page: 00427 Item: 003 Record 22 of 35 records	SMITH, WILLIAM, PLAT FOR 75.75 ACRES ON HORSE BRANCH, FAIRFIELD DISTRICT, SURVEYED BY JAMES KENNEDY. View all index terms	10/21/1813	No online image available
Series: S213192 Volume: 0043 Page: 00501 Item: 002 Record 23 of 35 records	FERGUSON, ABRAHAM, PLAT FOR 61 ACRES ON DUTCHMANS CREEK, FAIRFIELD DISTRICT, SURVEYED BY ABRAHAM FERGUSON. View all index terms	2/23/1814	No online image available
Series: S213192 Volume: 0044 Page: 00121 Item: 002 Record 24 of 35 records	PICKETT, JOHN SR., PLAT FOR 9.9 ACRES NEAR DUTCHMANS CREEK, FAIRFIELD DISTRICT, SURVEYED BY JOHN WOODWARD. View all index terms	12/21/1815	No online image available
Series: S213192 Volume: 0044 Page: 00126	HAVIS, JESSE AND ARTHUR YARBOROUGH, PLAT FOR 414 ACRES ON BEAVERDAM BRANCH, FAIRFIELD DISTRICT, SURVEYED BY JOHN A. THARP. View all index terms	1/2/1816	No online

Item: 001 Record 25 of 35 records			image available
Series: S213192 Volume: 0044 Page: 00157 Item: 003 Record 26 of 35 records	HAVIS, JESSE AND SAMUEL S. GAMBLE, PLAT FOR 420 ACRES ON WATEREE CREEK, FAIRFIELD DISTRICT, SURVEYED BY HENRY MOORE. View all index terms	3/8/1816	No online image available
Series: S108093 Reel: 0011 Frame: 00478 Item: 000 Record 27 of 35 records	WOODWARD, JOHN OF FAIRFIELD DISTRICT, FAIRFIELD COUNTY WILL TYPESCRIPT (11 FRAMES) (MSS WILL: FAIRFIELD DISTRICT ESTATE RECORD BOOK E, VOL. 7, PAGES 122-127; ESTATE PACKET: MISSING) View all index terms	1817	Online images available
Series: S108093 Reel: 0011 Frame: 00489 Item: 000 Record 28 of 35 records	YARBOROUGH, JOHN OF FAIRFIELD DISTRICT, FAIRFIELD COUNTY WILL TYPESCRIPT (2 FRAMES) (MSS WILL: FAIRFIELD DISTRICT ESTATE RECORD BOOK E, VOL. 7, PAGES 84; ESTATE PACKET: FILE 36, PKG. 586). View all index terms	3/20/1817	Online images available
Series: S165015 Year: 1819 Item: 00113 ignore: 000 Record 29 of 35 records	TRUSTEES OF THE METHODIST EPISCOPAL CHURCH OF MONTICELLO IN FAIRFIELD DISTRICT, PETITION ASKING TO BE INCORPORATED. (2 PAGES) View all index terms	11/24/1819	No online image available
Series: S165015 Year: 1819 Item: 00114 ignore: 000 Record 30 of 35 records	TRUSTEES OF THE METHODIST EPISCOPAL CHURCH OF MONTICELLO IN FAIRFIELD DISTRICT, PETITION ASKING TO BE INCORPORATED. (2 PAGES) View all index terms	11/24/1819	No online image available
Series: S213192 Volume: 0047 Page: 00349 Item: 001 Record 31 of 35 records	KNIGHTON, SAMUEL, PLAT FOR 2.7 ACRES IN FAIRFIELD DISTRICT, SURVEYED BY WILLIAM MCDANIEL. View all index terms	2/18/1825	No online image available
Series: S108093 Reel: 0011 Frame: 00725 Item: 000 Record 32 of 35 records	PICKETT, FRANCIS OF FAIRFIELD DISTRICT, FAIRFIELD COUNTY WILL TYPESCRIPT (MSS WILL: FAIRFIELD DISTRICT ESTATE RECORD BOOK H, VOL. 10, PAGE 209-210; ESTATE PACKET: FILE 61, PKG. 937) (2 FRAMES). View all index terms	1827	Online images available
Series: S108093 Reel: 0011 Frame: 00683 Item: 000 Record 33 of 35 records	HAVIS, JESSE OF FAIRFIELD DISTRICT, FAIRFIELD COUNTY WILL TYPESCRIPT (MSS WILL: FAIRFIELD DISTRICT ESTATE RECORD BOOK H, VOL. 10, PAGE 224; ESTATE PACKET: FILE 51, PKG. 792) (4 FRAMES). View all index terms	1/2/1828	Online images available
Series: S108093 Reel: 0011 Frame: 00649 Item: 000 Record 34 of 35 records	BOULWARE, MUSCO OF FAIRFIELD DISTRICT, FAIRFIELD COUNTY WILL TYPESCRIPT (MSS WILL: FAIRFIELD DISTRICT ESTATE RECORD BOOK H, VOL. 10, PAGE 137; ESTATE PACKET: FILE 39, PKG. 613) (5 FRAMES). View all index terms	4/30/1828	Online images available
Series: S108093 Reel: 0011 Frame: 00904 Item: 000 Record 35 of 35 records	ASHLEY, WILLIAM OF FAIRFIELD DISTRICT, FAIRFIELD COUNTY WILL TYPESCRIPT (MSS WILL: FAIRFIELD DISTRICT ESTATE RECORD BOOK M, VOL. 14, PAGE 223; ESTATE PACKET: FILE 37, PKG. 596) (3 FRAMES). View all index terms	7/7/1834	Online images available

Images and texts on these pages are intended for research or educational use. Please read our [statement](#) on use and reproduction for further information on how to obtain a photocopy or how to cite an item. This site works best with Microsoft Internet Explorer.



AROUND THE MUSEUM

DECEMBER 2015

CHRISTMAS CANDLELIGHT

OPEN HOUSE AND RECEPTION AT THE MUSEUM

The Fairfield County Museum announces its Annual Christmas Open House at its 231 S. Congress St. location in Winnsboro on December 6 from 4 to 7 PM. In addition to the gala event, museum volunteers have assembled two very interesting new exhibits. On the ground floor there is a display of antique sleigh bells from the collection of Ed Gates. A room on the second floor has been fitted up as an old-timey country store, with artifacts from several Fairfield County commercial establishments representing the late 1800s up through early 1900s periods.

Many volunteers annually contribute to this event and several organizations participate in preparing for the festivities. Our community's beautiful 1830 Museum building will be decorated for the season in

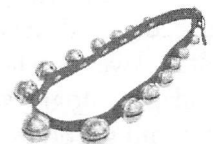


period fashions by the ladies of several partnering garden clubs. The Fairfield County Historical and the Genealogy Societies will provide refreshments for all. A slate of local musicians will perform in the parlor and the 1854 square Rosewood piano is being tuned to accompany performers and participatory caroling along with several other offerings. There will be a children's bell choir, a brass duet, a classical string performance, and some traditional vocal/string performances. The museum is promoting two other in-town offerings earlier during the afternoon with Handel's *Messiah* to be

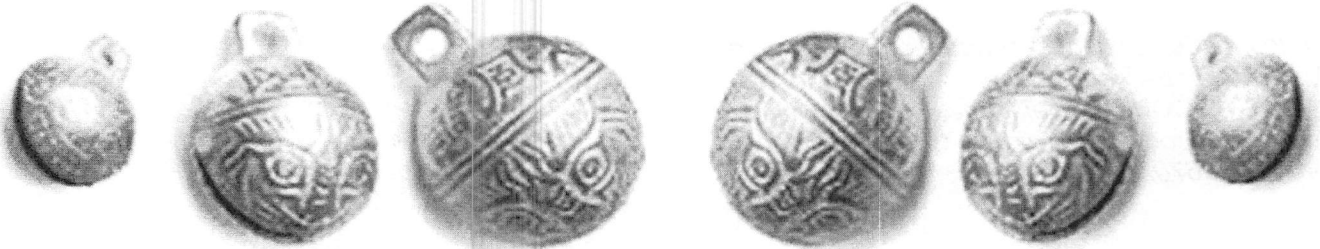
performed by community singers at Bethel ARP church beginning at 3 PM. The Pinetree Players will be presenting their Christmas play, *Dashing Through the Snow*, also at 3 PM.

Both of these programs take place within walking distance of the Museum. The public is invited to join us to herald the Christmas season in our community.

Additional information can be gotten at 635-9811 or by writing fairfieldmus@truvista.net.



Membership in the Fairfield County Historical Society



MEMBERSHIP CLASSIFICATIONS

I. Individual for one year \$ 15.00

F. Family for one year \$ 20.00

Corp. Business for one year \$125.00

Life. \$250.00

Special Gift for:

“The Catharine Stratton Ladd Fund” \$ _____

A fund for the upkeep of the interior of the Fairfield County House Museum

“Douglass Memorial Fund for Shutters” \$ _____

A fund for the purchasing of window shutters for the exterior.

Optional donation/memorial: \$ _____

In Memory of: _____

Name _____

Address _____

Email _____

Telephone _____

Please inform us of address and family member changes. Send your renewal and tax exempt donations to

The Fairfield County Historical Society
P. O. Box 6
Winnsboro, SC, 29180

